



Financial Information

TELEKURS **iD**

Telekurs FinXL 1.5

Installation user guide

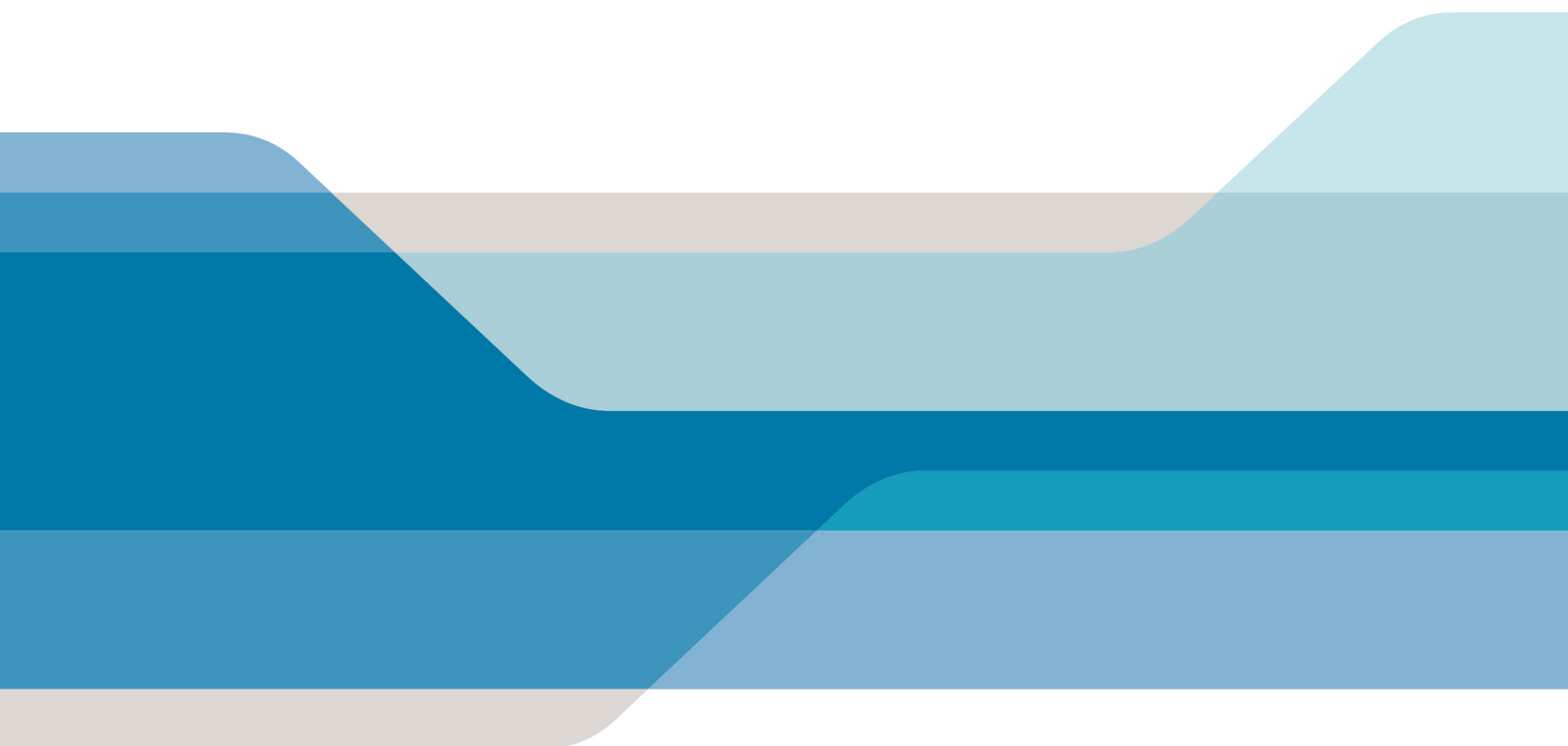


Table of contents

1. Prerequisites	3
Operating system (minimal requirements)	3
Software requirements	3
Browser requirements	3
Hardware requirements	3
2. Installation Process	5
Start installation	5
3. Silent installation mode	11
4. Telekurs FinXL Add-in and Toolbar	14
5. FinXL activation	15
6. Connection Settings	16
7. Auto Update	18
8. Mozilla Firefox	20
9. Installation on 64 bits systems	20
10. Installation on Citrix server	20

1. Prerequisites

Operating system (minimal requirements)

Windows XP: service pack 3

Windows Vista: service pack 2

Windows 7 32 bits/64 bits service pack 1

Windows 8 32 bits/64 bits

Citrix : XenApp 6

Software requirements

As Telekurs FinXL is an Excel Add-in, Excel has to be fully installed before starting Telekurs FinXL.

Telekurs FinXL does not provide any more support for Excel 2002 as Microsoft ended its Office XP support on July 12, 2011. In this case, customers must upgrade to 2003/2007/2010 Excel versions.

For increased reliability, we advise customers to install the latest associated Service Pack:

Excel 2003 Version 11.0.X	Service Pack 3 (SP3)
Excel 2007 Version 12.0.X	Service Pack 3 (SP3)
Excel 2010 Version 14.0.X	Service Pack 1 - 32 bits

Browser requirements

- Internet Explorer 6 or higher
- Mozilla Firefox 3 or higher

Required settings

- Allow cookies
- Allow popups

Hardware requirements

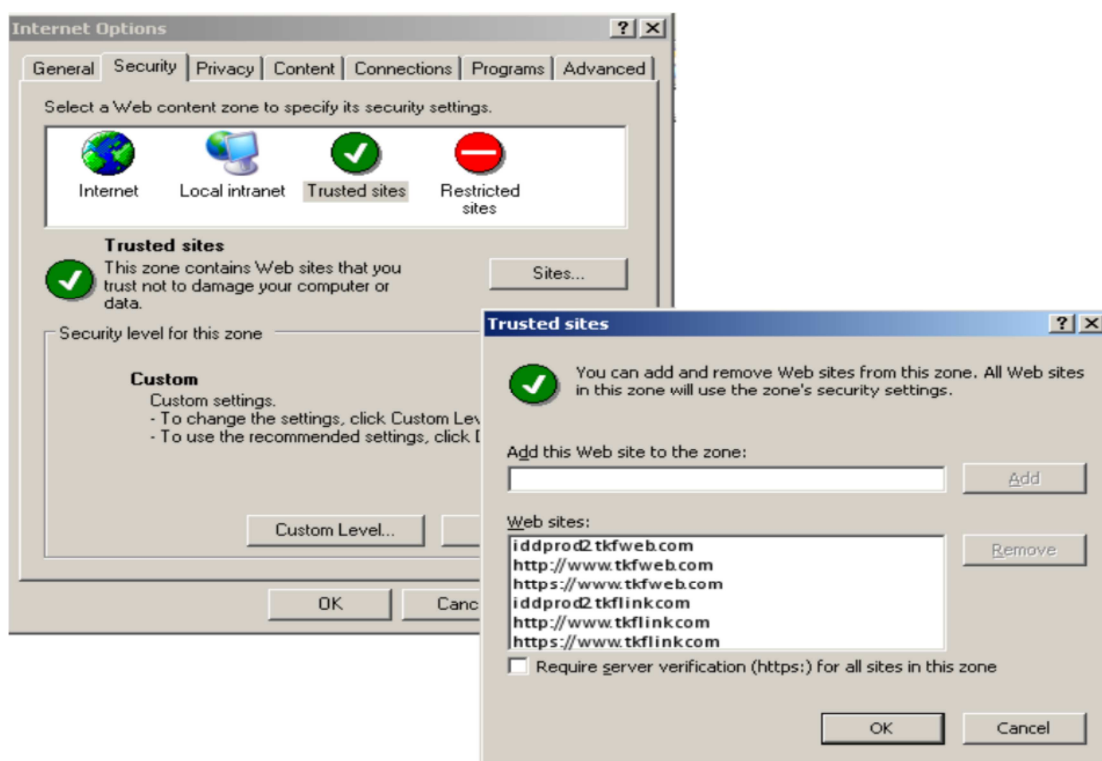
- Pentium IV
- RAM: 1 GB.
- Free disk space: 30 MB.

Please note:

- Account used for setup must have administrator rights.
- Telekurs FinXL user account must have writing permissions on Telekurs FinXL folder (usually C:\Program Files\telekurs\FinXL).
- **Analysis Toolpak** and **Analysis Toolpak-VBA** Excel add-ins must be disabled prior FinXL installation. We highly recommend disabling all Excel add-ins except Telekurs FinXL class.
- The MIME type "application/octet-stream" must be able to pass through the proxy instance.

Trusted sites

Trusted sites must be updated as follows:



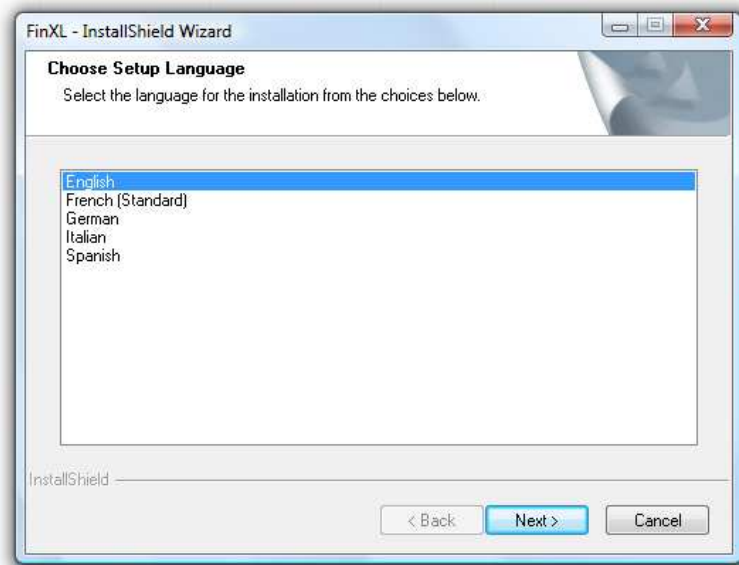
Single IP address for connections

The IP address being used for frontdoor connection, use of a single IP address must be ensured. If multiple providers, the same one must be used for TkiD/FinXL connections, in order to avoid connection loss.

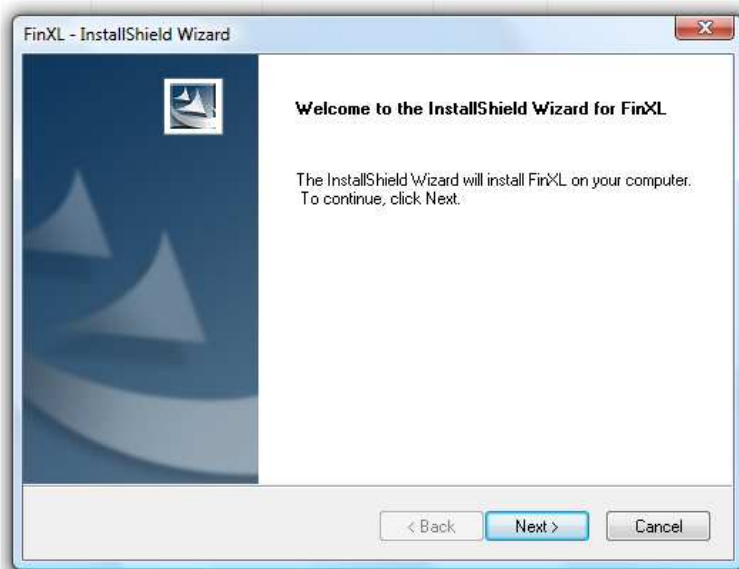
2. Installation Process

Start installation

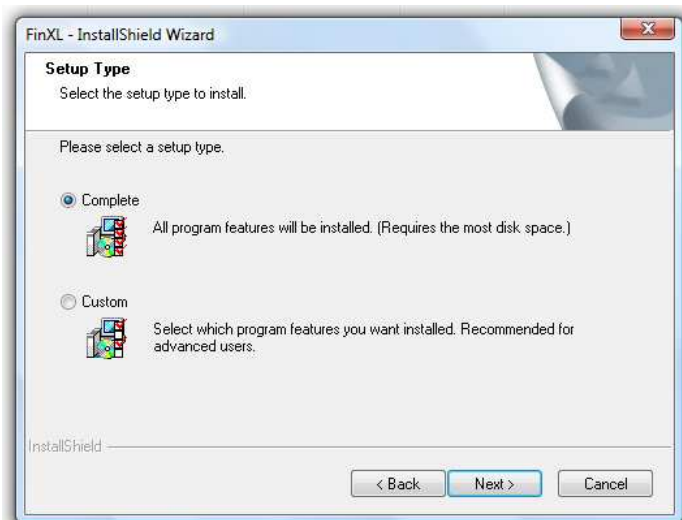
Double-click on setup.exe and select your installation language.



Click «Next».



Select the installation mode “Complete” or “Custom” - then click “Next”. Telekurs FinXL will be installed in the “Program Files” directory (complete mode) or in the folder you have selected (custom mode).

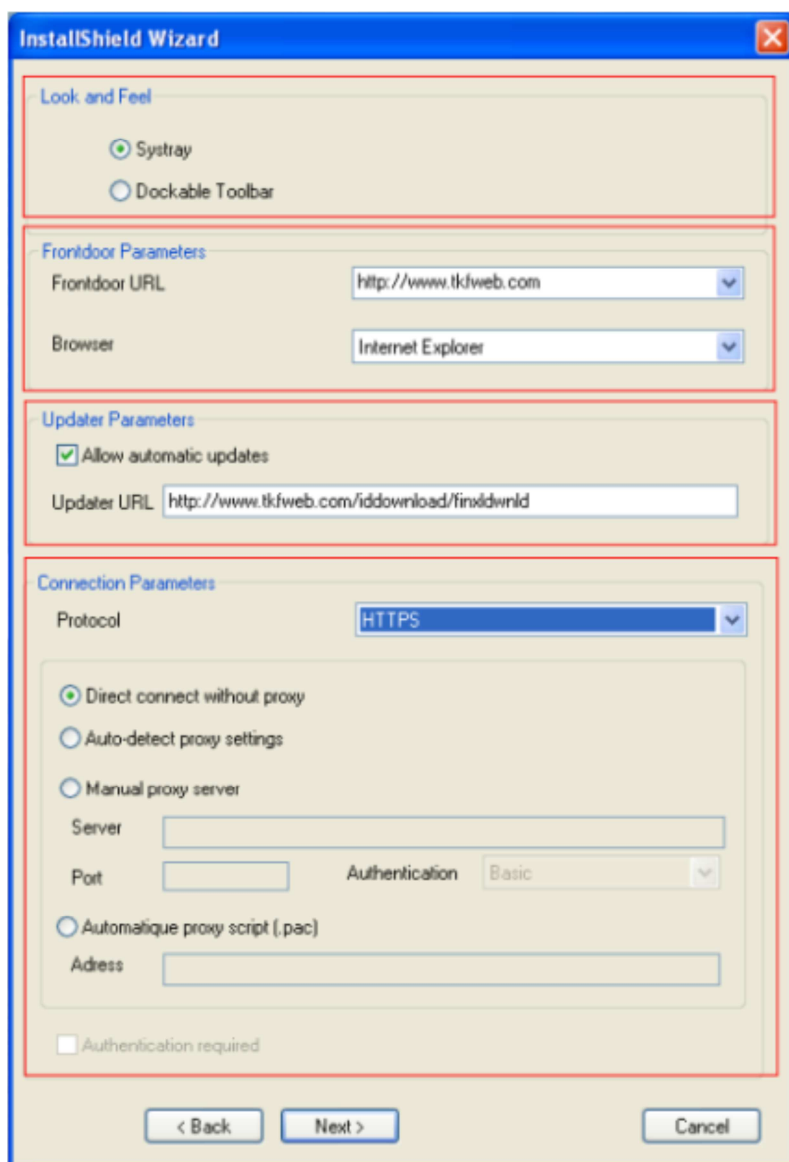


a

b

c

d



a. Look and Feel parameters

This parameter enables to define FinXL Toolbar and Updater Look and Feel. "Systray" option is selected by default.

Please note:

If FinXL user is not allowed to use/show icons on Windows Systray, choose "Dockable Toolbar" option.

b. Selection of the Frontdoor parameters (URL, browser)

Select one of the four Frontdoor URLs:



By default, <http://www.tkfweb.com> – Internet Explorer is selected.

The Frontdoor is the single access door for all SIX Financial Information products, which enables a single sign-on (SSO): once connected to the Frontdoor, you do not have to re-enter your login parameters to access to another Telekurs product.

Please note:

The Frontdoor parameters for Telekurs FinXL have to be the same as the ones used for TKiD:

- Same **browser** : IE/Firefox
- Same **Frontdoor URL** : same **host** (tkfweb.com/tkflink.com) and same **protocol** (http/https)

For instance, if Firefox is used for TKiD and frontdoor is www.tkfweb.com with a HTTPS connection, you must select Firefox and <https://www.tkfweb.com>

This parameter can also be changed in Connection Settings.

If you select Firefox browser, future Firefox upgrades may delete FinXL registration information. You will have to reinstall FinXL after Firefox upgrade.

c. Selection of the updater parameters

You can choose to be advised as soon as a new Telekurs FinXL version is available.

By default, the updater is available on <http://www.tkfweb.com/iddownload/finxldwnld> but you can indicate another URL.

When you are notified of a new Telekurs FinXL release, you will have to launch the installation (it is not an automatic process).

If for any reason your IT administration doesn't allow this kind of process, this option can fortunately be disabled. Consequently you won't receive any Telekurs FinXL update notifications.

d. Selection of the connection parameters

You can select TCP, HTTP (default value) or HTTPS protocol. If you want to run Telekurs FinXL with:

- A TCP connection, the following ports 15119 / 15120 have to be opened to iddprod2.tkfweb.com (Internet) or to iddprod2.tkflink.com (Finance IPNet)
- An HTTP connection, port 80 has to be opened to iddprod2.tkfweb.com (Internet) or to iddprod2.tkflink.com (Finance IPNet)

- An HTTPS connection, port 443 has to be opened to iddprod2.tkfweb.com (Internet) or to iddprod2.tkfink.com (Finance IPNet)

If your network doesn't need to pass through a proxy server, choose the direct connection without proxy.

If you need to define a proxy server, note that it works with the protocol HTTP and HTTPS according to your proxy.

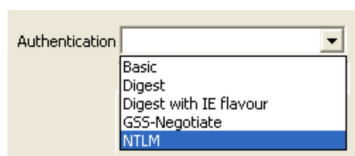
There are 3 ways to set the proxy server:

- 1) By auto-detection :

This mode works like the previous mode except that FinXL will try to find first if a proxy script (.pac) is defined on the DHCP or the DNS. If it doesn't find a proxy.pac, it will search if an address of a proxy server is defined for your LAN. If nothing is defined, FinXL will try to pass in direct mode without proxy.

Please note: As of version 1.5, the default mode is auto-detection. It lets FinXL finds out the right proxy server automatically.

- 2) By defining the address of a proxy server :
Enter the proxy server address in the field Server
Enter the proxy port number in the field Port
Select one authentication system



- 3) By defining the address of an automatic proxy script (.pac) :
FinXL will retrieve the proxy.pac and get the proxy server defined in this script (the proxy script can define a direct connection too).

Please keep in mind that currently, FinXL gets only the first proxy server defined. If your proxy.pac returns a list of proxy servers. Only the first one will be taken. The load balancing between proxy servers hasn't been yet implemented.

If the definition of proxy.pac is wrong, FinXL will try next to search if a proxy server is defined for your LAN. If nothing is defined, FinXL will try to pass in direct mode without proxy.

These proxy parameters will be saved in toolbarv4.ini, available in Telekurs FinXL folder.

If your proxy server requires authentication, click on the checkbox. Setting login and password is done after the installation process by the end-user in "Connection Settings" page.

Example:

Connection Parameters

Protocol: HTTPS

☐ Direct connect without proxy

☐ Auto-detect proxy settings

☒ Manual proxy server

Server:

Port: Authentication: NTLM

☐ Automatique proxy script (.pac)

Adress:

☒ Authentication required

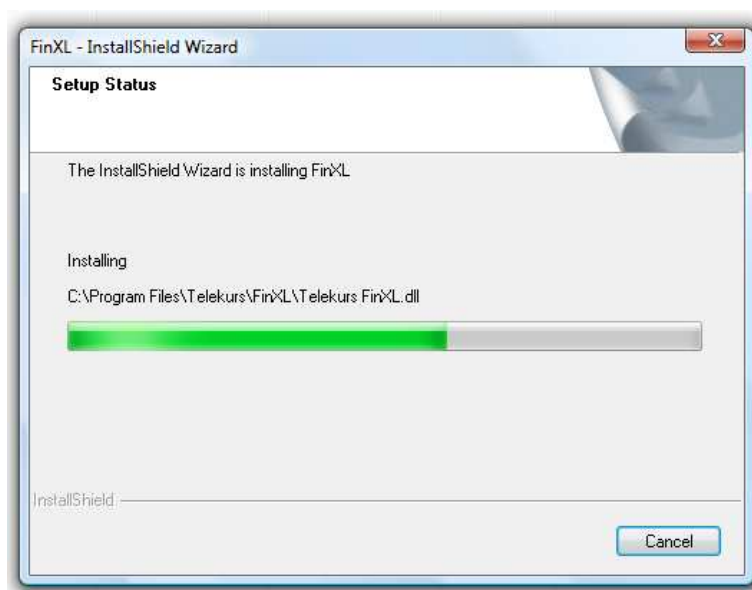
Note that in NTLM mode, FinXL can now retrieve the login and password of your active directory to connect through the proxy server. In this case, don't check this option.

Please note:

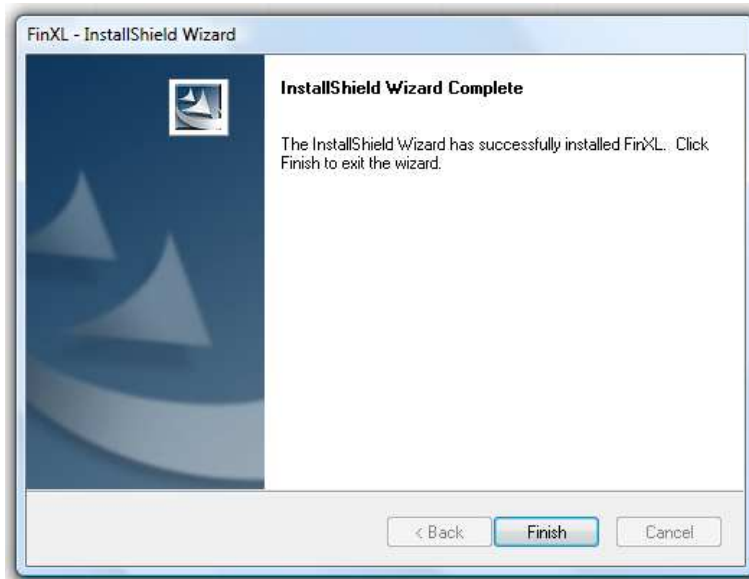
In case of an upgrade, all your settings are proposed by default. You can change them if needed.

Click "Next" to start the installation.

Installation in progress...

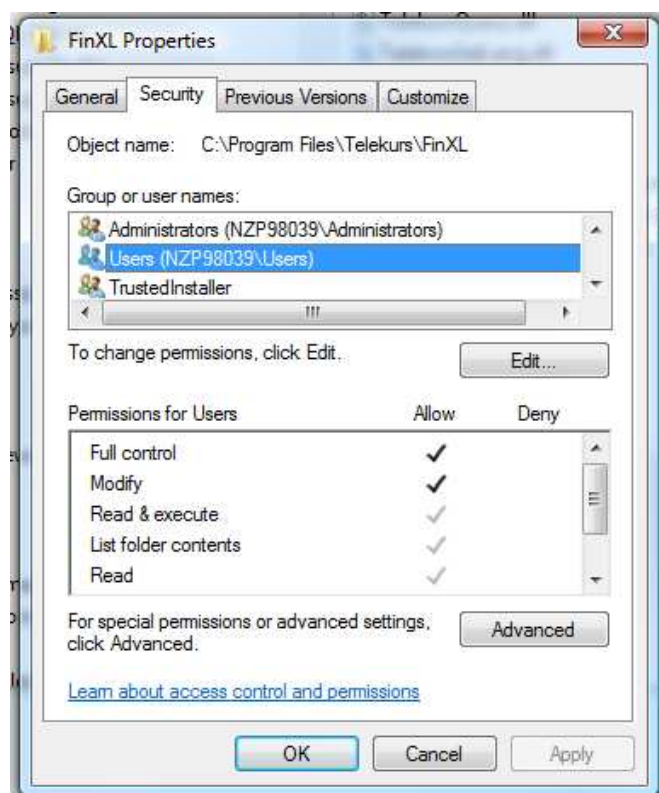


Once finished, click “Finish” to complete the installation and the “InstallShield wizard”:



Please note:

You need **full control** on the new created folder FinXL. You will find this folder under C:\Program Files\Telekurs\FinXL:



3. Silent installation mode

From version 1.2.1.6 onwards a silent setup is available.

A silent setup does not prompt the user for input. A silent setup must get its user input from a different source. That source is the InstallShield Silent answer file (.iss file).

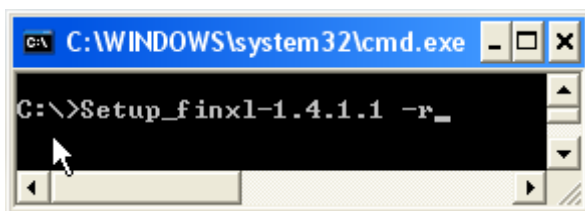
A response file contains information similar to what a user would enter as responses to dialog boxes when running a normal setup (see § 2).

How to build an answer file ?

Launch a DOS session in order to perform the record mode.

Windows Start menu then choose Run and enter cmd.

If you enter **Setup_finxl-1.4.1.1.exe -r**, an answer file "setup.iss" (name given by default) will be created in the default folder C:\WINDOWS



You may want to define the name and/or the folder of the answer file. In this case, use **"-f1"** parameter.

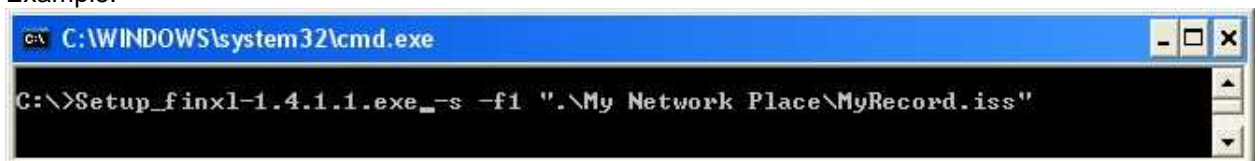
Example: **Setup_finxl-1.4.1.1.exe -r -f1 "...My Documents\MyRecord.iss"**.
An answer file **"MyRecord.iss"** will be created in **"...My Documents"** folder.

How to make a silent installation on target computers?

The answer file created with the record mode on the master computer must be reachable by the target computers.

In order to install Telekurs FinXL 1.4.1.1 automatically and silently on each target computer, use **"-s"** and **"-f1"** parameters.

Example:



"MyRecord.iss" answer file allows you to replicate on each target computer the settings chosen during the record mode by the master computer.

Example of an answer file recorded with FinXL default parameters

```
[InstallShield Silent]
Version=v7.00
File=Response File
[File Transfer]
OverwrittenReadOnly=NoToAll
[{BAFCC024-149D-48EC-99CC-0543FF1F46D2}-DlgOrder]
Dlg0={BAFCC024-149D-48EC-99CC-0543FF1F46D2}-SdWelcome-0
Count=5
Dlg1={BAFCC024-149D-48EC-99CC-0543FF1F46D2}-SetupType2-0
Dlg2={BAFCC024-149D-48EC-99CC-0543FF1F46D2}-SettingsDialog-0
Dlg3={BAFCC024-149D-48EC-99CC-0543FF1F46D2}-SdStartCopy2-0
Dlg4={BAFCC024-149D-48EC-99CC-0543FF1F46D2}-SdFinish-0
[{BAFCC024-149D-48EC-99CC-0543FF1F46D2}-SdWelcome-0]
Result=1
[{BAFCC024-149D-48EC-99CC-0543FF1F46D2}-SetupType2-0]
Result=304
[{BAFCC024-149D-48EC-99CC-0543FF1F46D2}-SettingsDialog-0]
Result=1
Systray=1
FrontdoorURL=http://www.tkfwweb.com
FrontdoorBrowser=IE
UpdaterAllowed=1
UpdaterURL=http://www.tkfwweb.com/iddownload/finxldwnld
Protocol=HTTP
UseProxy=0
AuthenticationMode='Basic'
ProxyAddress=' '
ProxyPort=' '
AuthenticationRequired=0
[{BAFCC024-149D-48EC-99CC-0543FF1F46D2}-SdStartCopy2-0]
Result=1
[Application]
Name=FinXL
Version=1.4.1.1
Company=Telekurs
Lang=0009
[{BAFCC024-149D-48EC-99CC-0543FF1F46D2}-SdFinish-0]
Result=1
bOpt1=0
bOpt2=0
```

Parameters	Description	Possible values
Systray	Look and Feel (Toolbar and Updater)	<ul style="list-style-type: none"> 1 : Systray (default) 0 : Dockable Toolbar
FrontdoorURL	URL of the Frontdoor	<ul style="list-style-type: none"> http://www.tkfwweb.com (default) http://www.tkflink.com https://www.tkfwweb.com https://www.tkflink.com
FrontdoorBrowser	Browser for the Frontdoor access	<ul style="list-style-type: none"> IE : Internet Explorer (default) FF : Firefox
UpdaterAllowed	Updater process parameter	<ul style="list-style-type: none"> 1 : allowed (default) 0 : not allowed
UpdaterURL	Updater URL	<ul style="list-style-type: none"> http://www.tkfwweb.com/iddownload/finxldwnld (default) Customised address if you want manage the auto-update for your company
Protocol	Connection protocol	<ul style="list-style-type: none"> TCP HTTP (default) HTTPS
UseProxy	Connection through a proxy	<ul style="list-style-type: none"> 0 : connection without proxy (default) 1 : connection through a proxy 2 : auto script config 3 : auto detect proxy settings

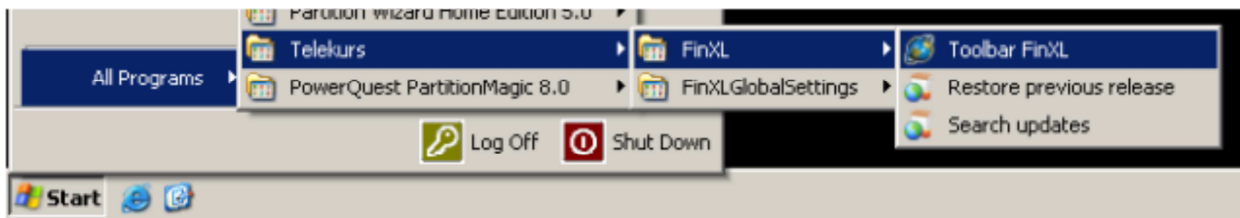
AuthenticationMode	Proxy authentication system	<p>Followings possible values are only used if UseProxy = 1.</p> <ul style="list-style-type: none"> • Basic • Digest • Digest with IE flavour • GSS-Negotiate • NTLM
ProxyAddress	Proxy server address	<p>Enter your proxy address or alias. This value is used only if UseProxy=1</p>
ProxyPort	Proxy port	<p>Enter your proxy port. This value is used only if UseProxy=1</p>
ProxyScript	Proxy script	<p>Enter the address of your proxy script This value is used only if UseProxy=2</p>
Parameters	Description	Possible values
AuthenticationRequired	Does your proxy require authentication	<p>This value is used only if UseProxy=1</p> <ul style="list-style-type: none"> • 0 : no authentication required • 1 : your proxy requires authentication (login and password must be set by end-user after the installation process in the "Connection Settings" page)

Please Note:

- If you intend to create an answer file for a first installation, the master computer shouldn't have any FinXL version already installed. You have to uninstall current release first on the master computer.
- If you want to build upgrades from a previous Telekurs FinXL release, this release has to be installed on master computer before recording the answer file.

4. Telekurs FinXL Add-in and Toolbar

After installation, a FinXL Toolbar program is available in your Start menu. This toolbar will be automatically launched when using Telekurs FinXL.



When opening Telekurs FinXL or the Telekurs FinXL Toolbar, connection will be automatically established with the chosen protocol (TCP, HTTP or HTTPS), to iddprod2.tkfweb.com (Internet) or to iddprod2.tkflink.com (Finance IPNet) if you are already connected to TK ID Frontdoor.

If not, the following interface will be opened for Frontdoor connection:

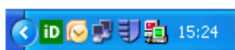
A screenshot of the SIX Financial Information Frontdoor login interface. The page has a blue header with the SIX logo and 'Financial Information' text. Below the header is a navigation bar with links: Login, Help, Contact, Info, and Logoff. The main content area is titled 'WELCOME TO FRONTDOOR' and 'Please login'. Below this is a login form with the following fields: 'CustomerID*' (containing 'CH10601'), 'UserID*' (containing 'tkbbd'), and 'Password* or RSA SecurID Passcode*'. There are two radio buttons for authentication: 'RSA SecurID' and 'Password' (which is selected). A 'Login' button is at the bottom of the form. A note at the top of the form states: '* All fields marked with an asterisk are required'.

6. Connection Settings

By default, FinXL connection is established on a HTTP protocol.

Once FinXL toolbar is launched, an ID icon appears in the Windows systray if you set this option in Look and Feel parameter. A visual feedback informs you about your connection status:

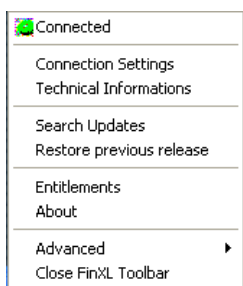
- green (connected)
- red (not connected)



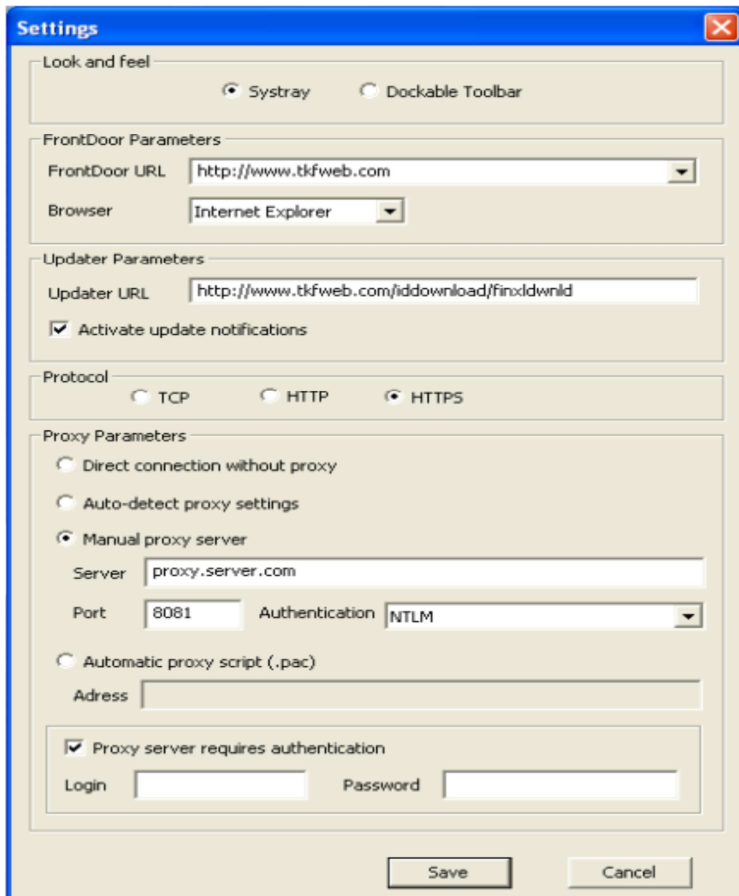
If you set “Dockable Toolbar”, this toolbar appears:



Then, with a right click on the ID button/toolbar, the following menu is opened:



By selecting “Connection Settings” menu, the following window will be opened:



- «Updater URL» is deactivated if automatic update process has not been selected during installation
- Look and Feel, Frontdoor parameters and protocol (TCP, HTTP, HTTPS) can be modified by end-user
- In Http/Https, a proxy can be defined. If proxy settings are configured by DHCP or DNS, you can activate the option Auto-detect proxy settings to retrieve the right proxy server. If you need to connect through a specific proxy, you can set the server name and the port directly by checking the option Manual proxy server. If you need to point to a specific proxy script, you can define the address of the proxy.pac in the field Address by checking the option Automatic proxy script.
- In case of HTTP / HTTPS connection through a required authentication proxy, login and password communicated by your system administrator must be set in this page. Click "Save" to save login and password in Registry.
Note that in NTLM mode, the login and password can be retrieved from the active directory. In this case, don't check "proxy server requires authentication".

If you are not able to connect, your proxy may not be supported. In this case, "Use proxy server" must be unchecked and the system administrator has to open or deactivate some proxy parameter or rules.

To prevent a virus scanner to block the stream, the following can be done:

- Clients can switch to https because with https the "feed" will not be scanned (**unless the customer use a state of art proxy – content filtering**)
- Proxy with virus scanner: Configure the push address of Six Financial Information in the proxy using the following addresses :
 - Finance IPNet : iddprod2.tkflink.com/*
 - Internet : iddprod2.tkfweb.com/*
- Only virus scanner: Add the push address of Six Financial Information to the white list using the following addresses:
 - Finance IPNet : iddprod2.tkflink.com/*
 - Internet : iddprod2.tkfweb.com/*

For other proxy configurations please check also the manual:

http://www.tkfweb.com/vegahelp/manuals_1_0/s4/installation-manual.pdf

7. Auto Update

Overview

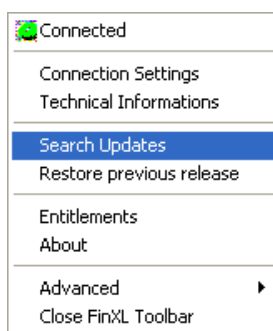
The user may decide to be automatically notified as soon a new Telekurs Finxl version is available.

This auto update installation process is neither mandatory nor automatic: it has to be launched manually by the user.

Process

If the user has selected the auto update option in the Telekurs Finxl installation process, the search for updates is automatic (once a day at the 1st FinXL Toolbar opening).

Otherwise, a manually search for updates is also available in the toolbar:



If a new FinXL version is available, a notification will be displayed:

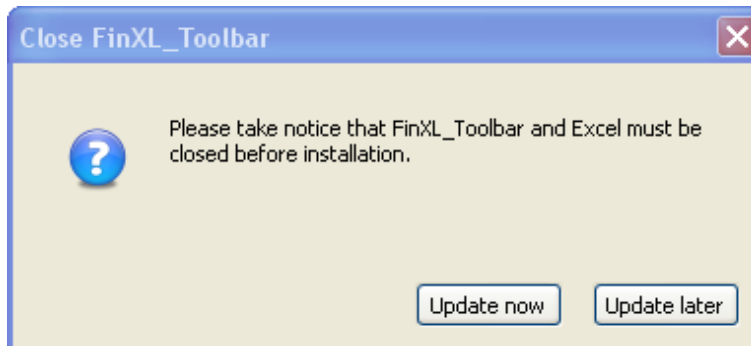
- With an icon and a tooltip in Windows Systray if you set “Systray” in Look and Feel parameter:



- With a dialogbox if you set “Dockable Toolbar” in Look and Feel parameter:



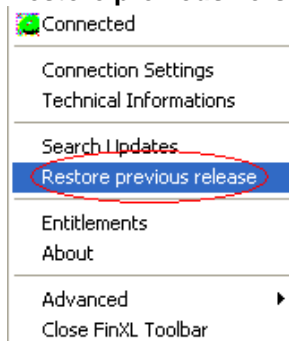
When the user clicks on the icon/button, the updates will be downloaded and installed automatically. The toolbar and Excel must be closed, otherwise the installation is aborted:



Once finished, a message will be displayed for reporting:



Restore previous version:



In case of a bug after a release update, this option enables the user to reinstall the previous version (a rollback process).

8. Mozilla Firefox

If you intend to choose Mozilla Firefox browser for Frontdoor connections, please note that:

- Firefox must be installed prior to FinXL.
- Firefox has to be stopped before starting FinXL setup
- After Firefox upgrades, a Firefox process often remains locked in memory.
 - This may result in connection failure for FinXL Toolbar.
 - If a reboot does not fix this issue, you need to reinstall FinXL.

9. Installation on 64 bits systems

FinXL is now available on Windows 64 bits operating systems for all Excel versions.

The setup process will automatically identify whether Excel version is 64 bits or 32 bits, and the appropriate FinXL version will be installed.

Take notice that 64 bits FinXL binary names are different from 32 bits ones: extension x64 is added to file names.

10. Installation on Citrix server

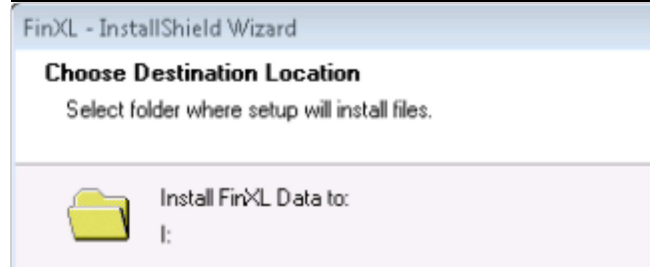
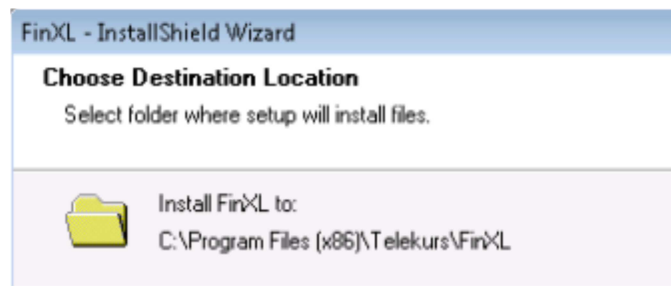
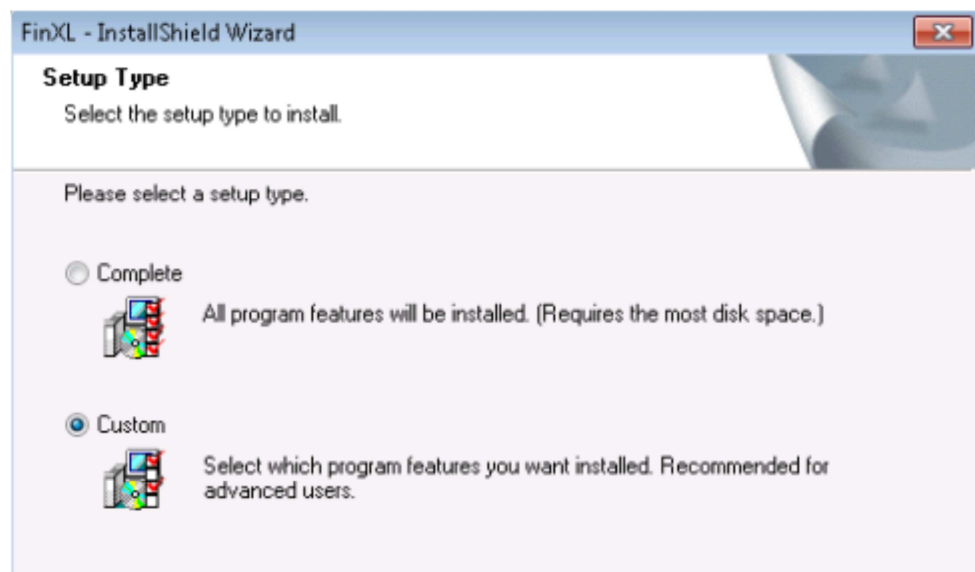
The installation of FinXL on the server with XenApp is the same as a classical installation, by running the FinXL setup.exe. It's only recommended to separate user data in order to give a specific environment to each user.

For that:

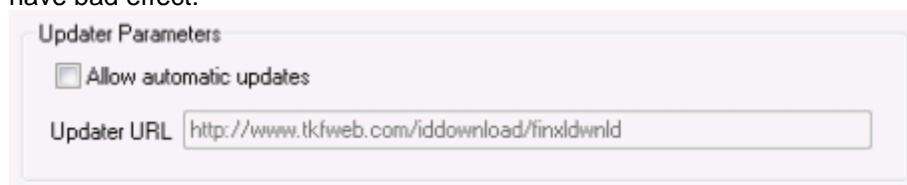
1) Install FinXL on the server as a master installation

Log on to the server machine (where the citrix server is installed) as administrator

- Create a location for **FinXL data for the master** and map it on a logical drive. For instance I: mapped on C:\FinXL_Data\Master
- Install FinXL with the setup.exe on the server with a custom installation. For the program part select the directory by default on C: and for data part select I:



Note: Be sure when installing FinXL to NOT activate Autoupdate as it make no sense to use it and will have bad effect:



2) Duplicate the FinXL data part for each user of FinXL accessing via TS

- Copy the content of C:\FinXL_Data\Master to C:\FinXL_Data\Users\user1... C:\FinXL_Data\Users\userN
- For each FinXL user you must define a local mapping I: to its dedicated data directory C:\FinXL_Data\Users\userXXX

Now, you have to deploy FinXL on client computers. From Citrix Delivery Services Console installed on your server machine, you have to publish these applications:

- 1) Toolbar FinXL (TelekursTOOLBAR.exe): You can find this executable in the installation directory
- 2) Excel: You didn't need to publish the dll FinXL (TelekursFinXL.dll). Excel will find automatically FinXL by the registry.
- 3) Browser web : You have to publish the browser web used to connect to the address tkfweb.com

